



# Sage 50cloud Pastel

Sage

## A. Installing Sage 50c Pastel Partner

### Important information

If you work at a company that uses Sage Pastel software, it is not recommended that you install the educational software on the same computer. Please install the educational software on a separate computer.

The process is completed in four sections:

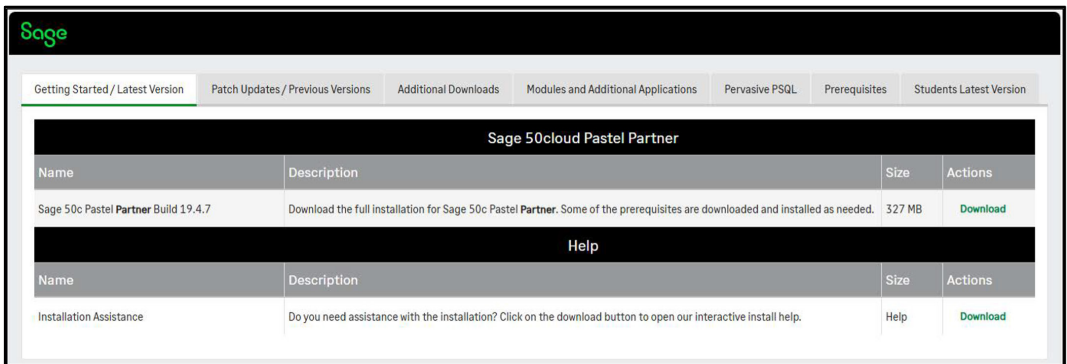
- Downloading Pervasive
- Installing Pervasive
- Downloading Sage 50c Pastel Partner
- Installing Sage 50c Pastel Partner

### Important information

For training/ educational purposes, it is important to first download and install Pervasive PSQL V10 Workgroup before downloading and installing the Sage 50c Pastel Partner software. To avoid encountering system errors, DO NOT download and install Pervasive PSQL V13 Workgroup when using the system for training/ educational purposes.

## Downloading Pervasive

1. Open your web browser and enter the following address:  
<https://pastelupdate.sagesouthafrica.co.za/>.
2. The following webpage will open.



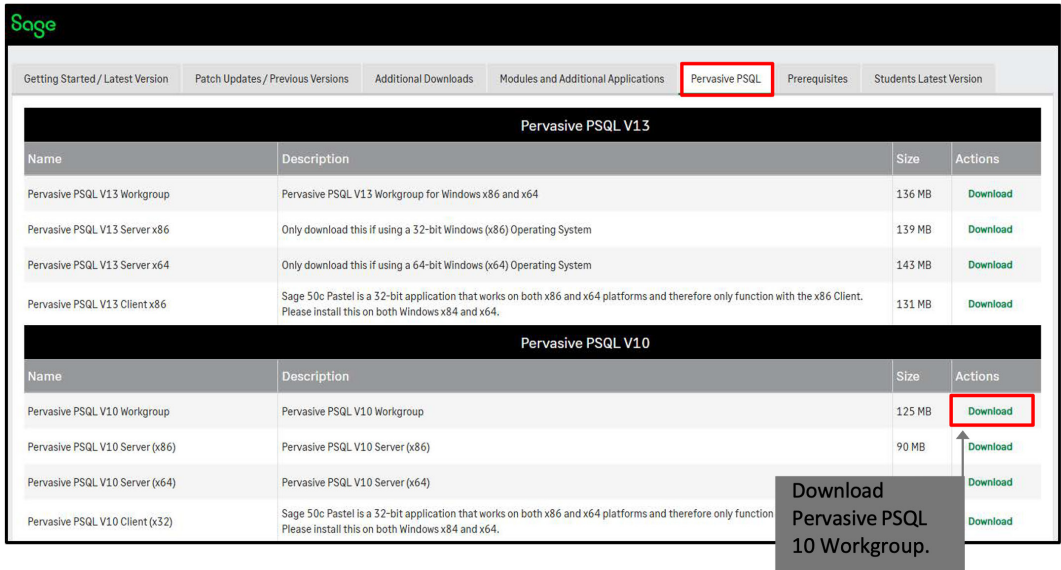
The screenshot shows the Sage 50cloud Pastel Partner download page. The page has a navigation bar with the following tabs: Getting Started / Latest Version, Patch Updates / Previous Versions, Additional Downloads, Modules and Additional Applications, Pervasive PSQL, Prerequisites, and Students Latest Version. The main content area is titled "Sage 50cloud Pastel Partner" and contains a table with the following data:

Name	Description	Size	Actions
Sage 50c Pastel Partner Build 19.4.7	Download the full installation for Sage 50c Pastel Partner. Some of the prerequisites are downloaded and installed as needed.	327 MB	<a href="#">Download</a>

Below the table is a section titled "Help" with the following data:

Name	Description	Size	Actions
Installation Assistance	Do you need assistance with the installation? Click on the download button to open our interactive install help.	Help	<a href="#">Download</a>

3. Click on the **Pervasive PSQL** tab and download **Pervasive PSQL V10 Workgroup**.



**Pervasive PSQL V13**

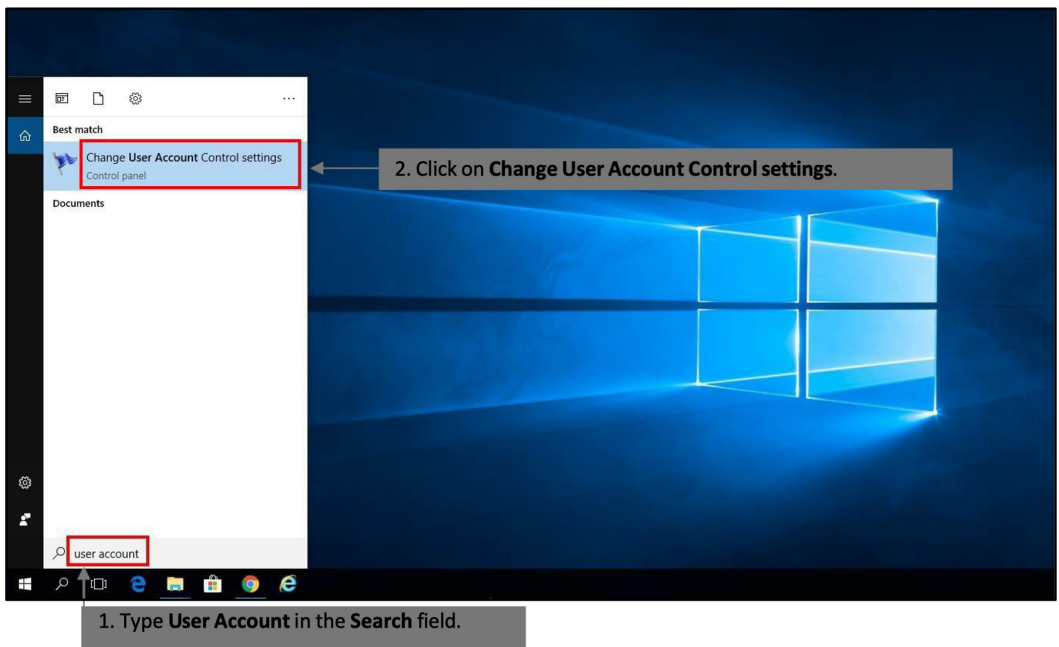
Name	Description	Size	Actions
Pervasive PSQL V13 Workgroup	Pervasive PSQL V13 Workgroup for Windows x86 and x64	136 MB	<a href="#">Download</a>
Pervasive PSQL V13 Server x86	Only download this if using a 32-bit Windows (x86) Operating System	139 MB	<a href="#">Download</a>
Pervasive PSQL V13 Server x64	Only download this if using a 64-bit Windows (x64) Operating System	143 MB	<a href="#">Download</a>
Pervasive PSQL V13 Client x86	Sage 50c Pastel is a 32-bit application that works on both x86 and x64 platforms and therefore only function with the x86 Client. Please install this on both Windows x84 and x64.	131 MB	<a href="#">Download</a>

**Pervasive PSQL V10**

Name	Description	Size	Actions
Pervasive PSQL V10 Workgroup	Pervasive PSQL V10 Workgroup	125 MB	<a href="#">Download</a>
Pervasive PSQL V10 Server (x86)	Pervasive PSQL V10 Server (x86)	90 MB	<a href="#">Download</a>
Pervasive PSQL V10 Server (x64)	Pervasive PSQL V10 Server (x64)		<a href="#">Download</a>
Pervasive PSQL V10 Client (x32)	Sage 50c Pastel is a 32-bit application that works on both x86 and x64 platforms and therefore only function with the x86 Client. Please install this on both Windows x84 and x64.		<a href="#">Download</a>

Download Pervasive PSQL 10 Workgroup.

4. Once the download is complete, close your internet browser and then confirm your **User Account Control settings** are set to **Never Notify**.
5. In the **Windows Search** field, type **User Account**. The option **Change User Account Control settings** will display. Click on this option.

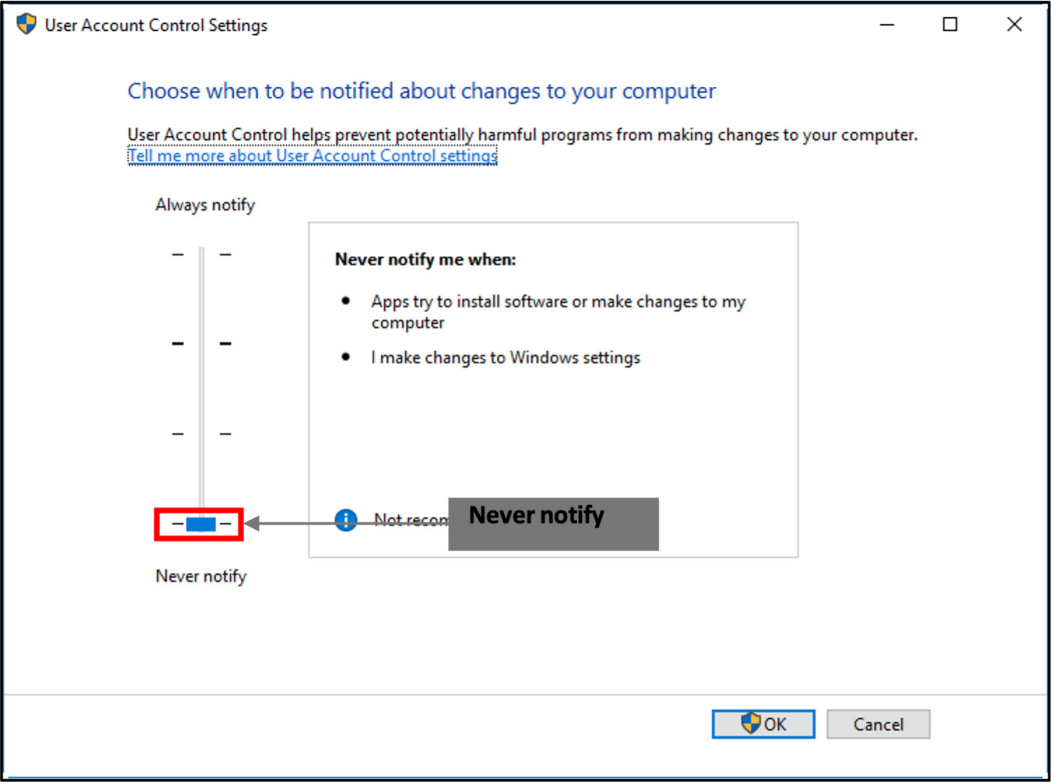


2. Click on Change User Account Control settings.

1. Type User Account in the Search field.

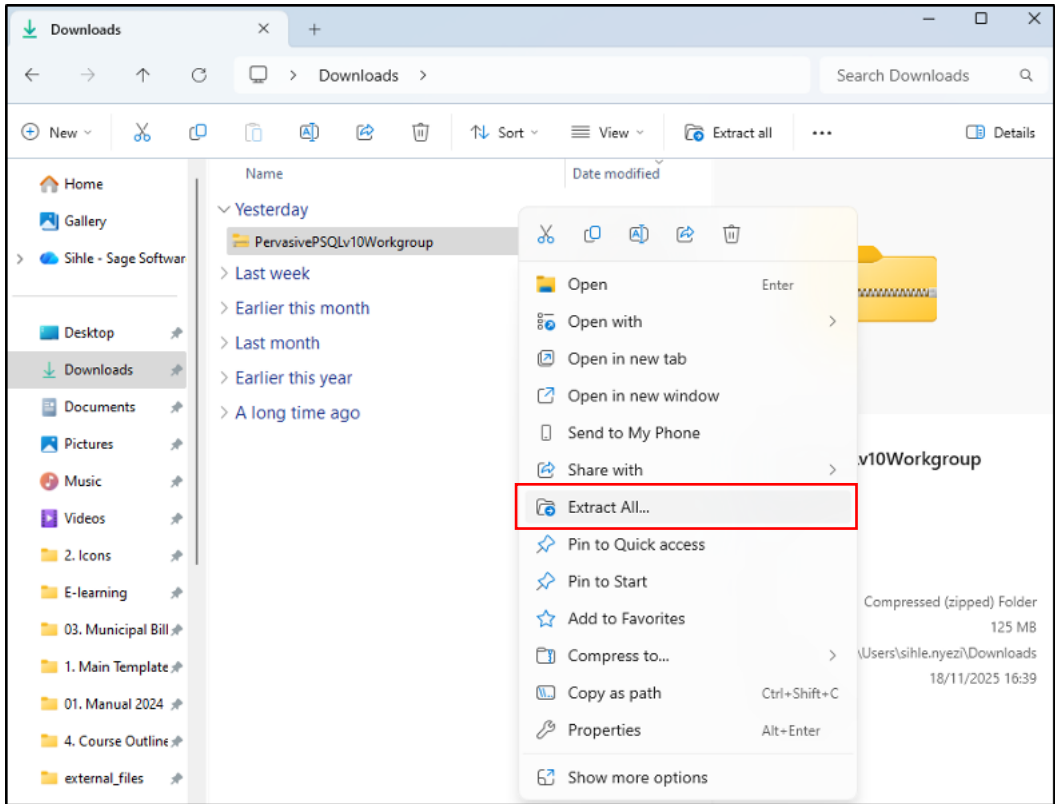
Installing Sage 50c Pastel Partner

6. On the next screen, confirm that the setting is set to **Never notify** and then click on the **OK** button. **You will need to restart your PC once you have made the change.**

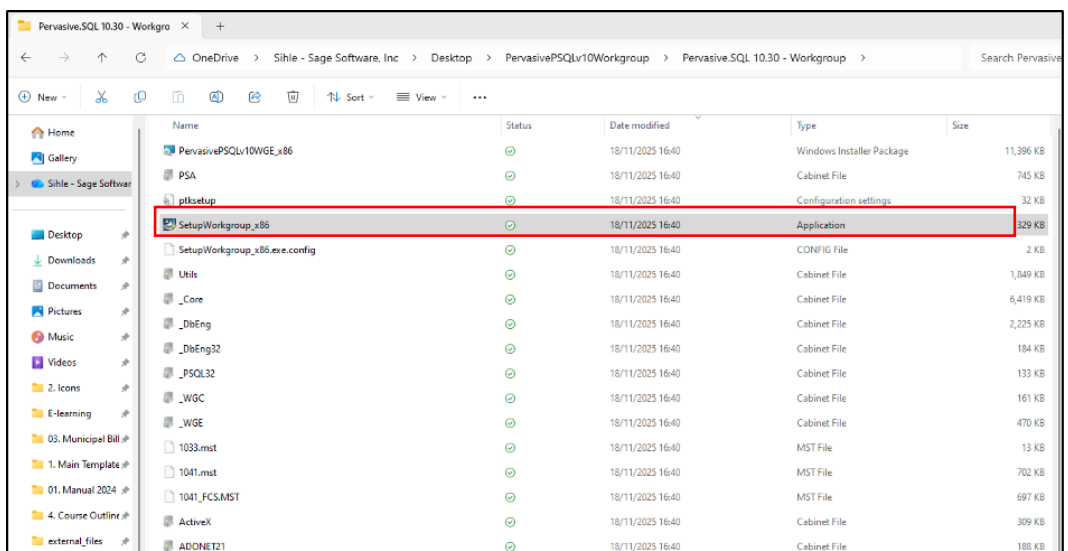


Installing Pervasive

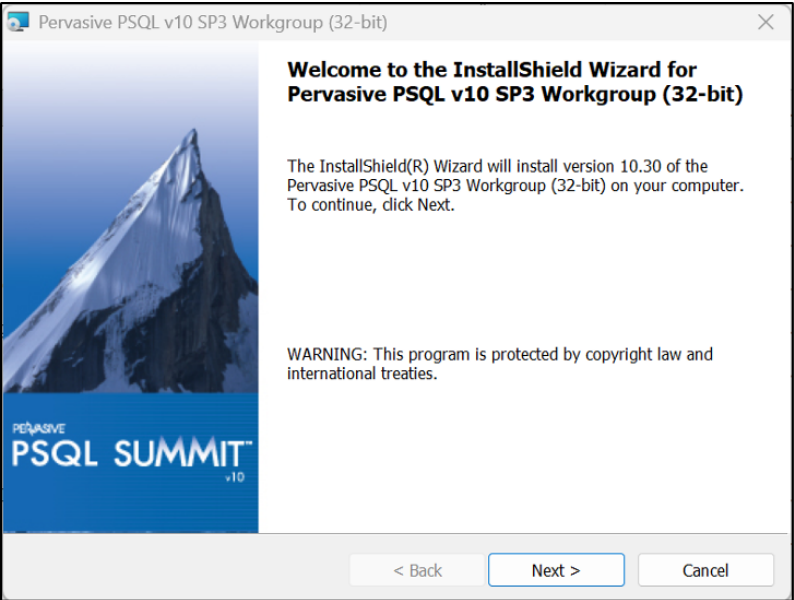
7. Locate the file you downloaded and right-click on the **PervasivePSQLv10Workgroup** zip file and select **Extract All** from the menu. This will uncompress the folder and create a new **Pervasive PSQLv10Workgroup** folder.



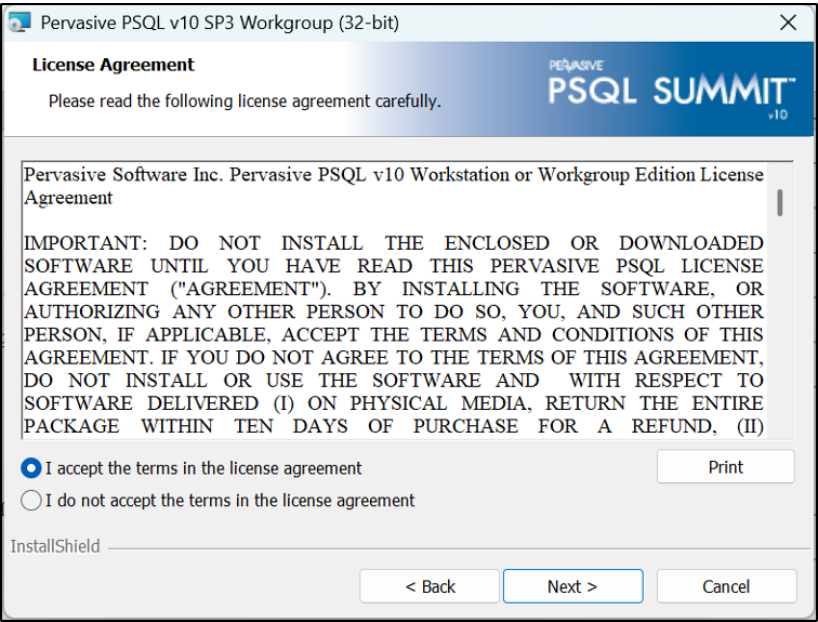
8. Open the extracted folder and click on the **SetupWorkgroup\_x86** file. This will start the installation of Pervasive.



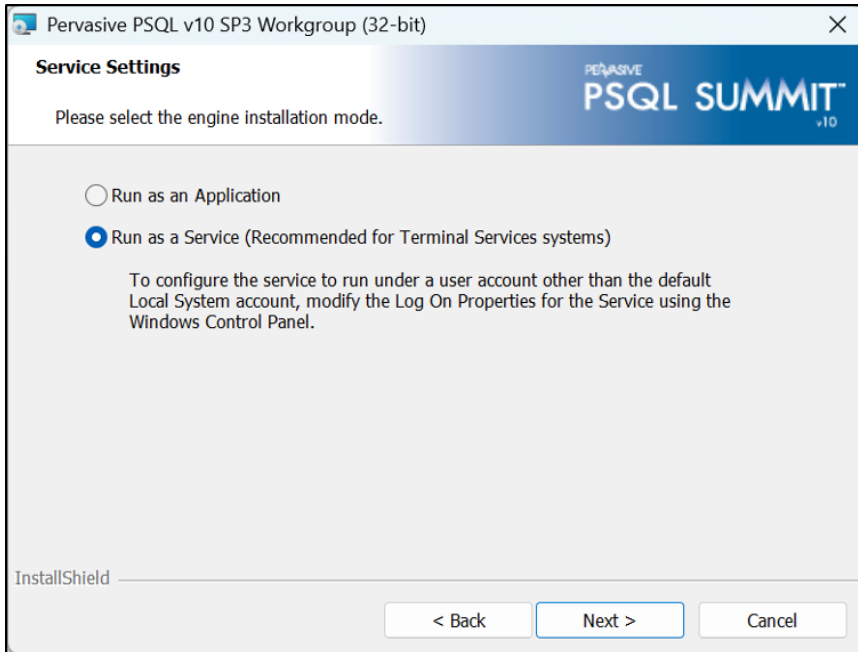
9. The **Welcome to the InstallShield Wizard** screen will display.



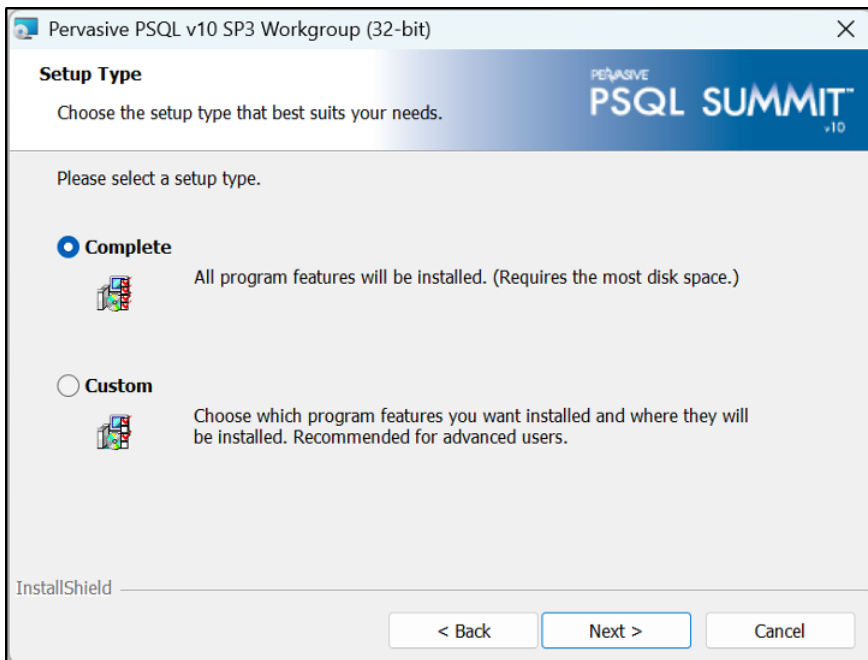
10. Click on the **Next** button.
11. Select the option **I accept the terms in the license agreement** and then click on the **Next** button.



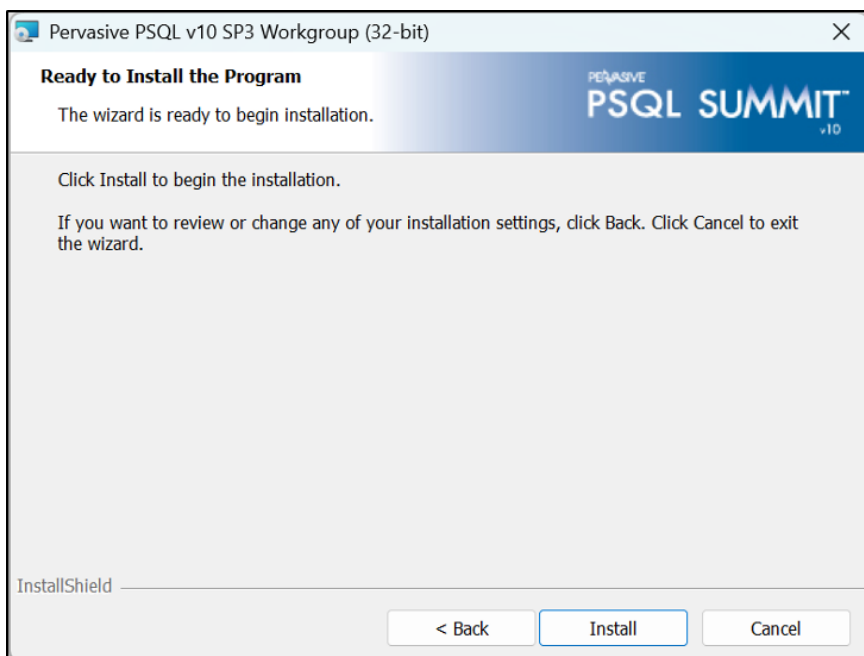
12. Select **Run as an Application** and click on the **Next** button.



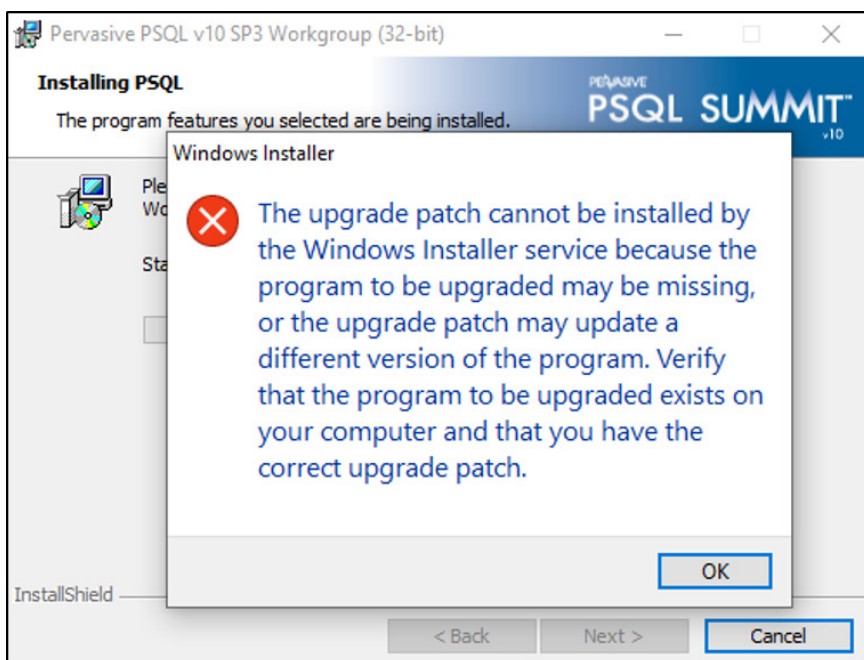
13. Select **Complete** as the setup type and click on the **Next** button.



14. Click on the **Install** button.

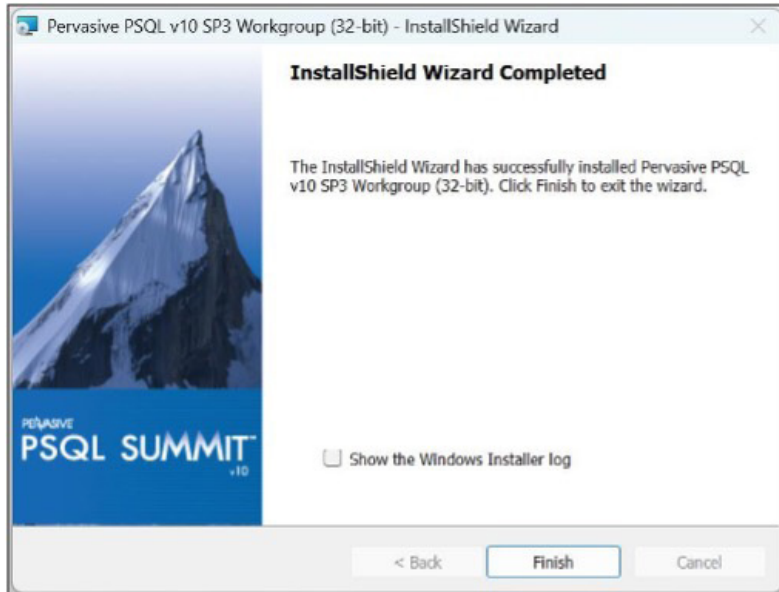


15. If the **Windows Installer** pop-up message appears during installation, click on the **OK** button.

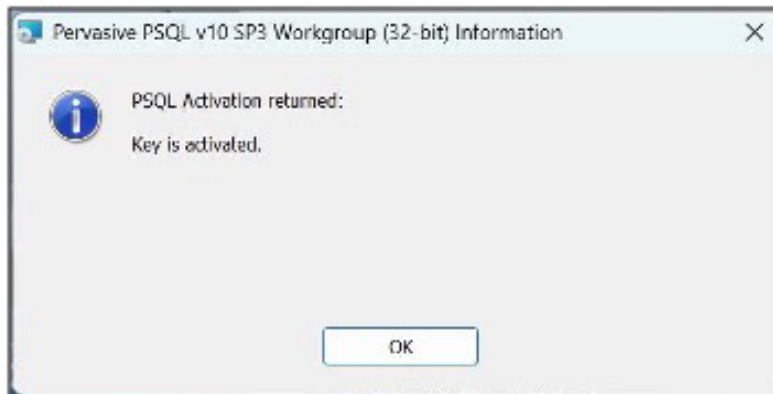




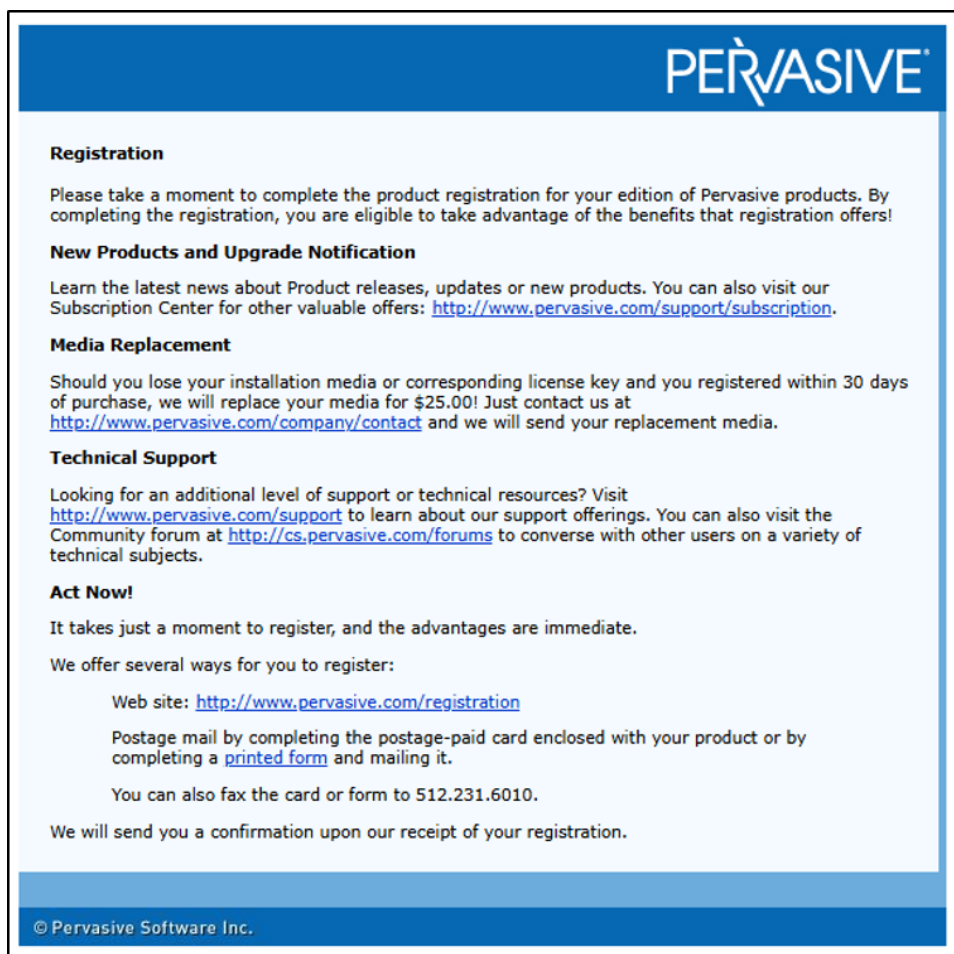
16. Once the installation is complete, click on the **Finish** button.



17. The **PSQL Activation** pop-up screen will appear, click on the **OK** button.



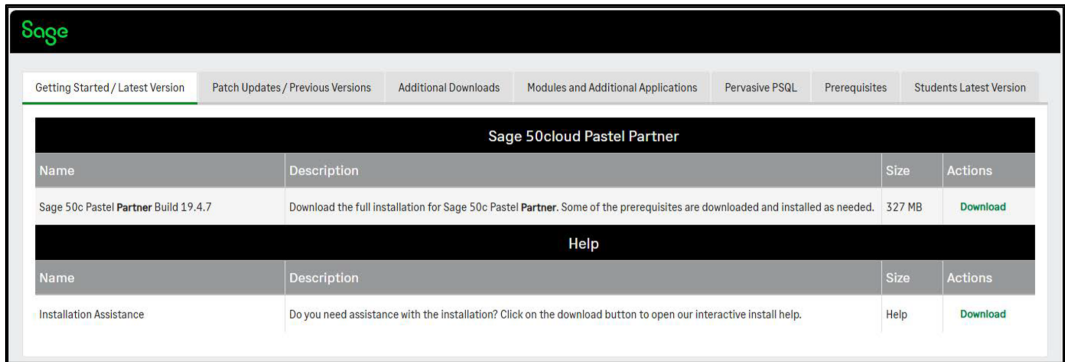
18. The **Pervasive Registration** screen will open in the browser. **Close** the webpage.



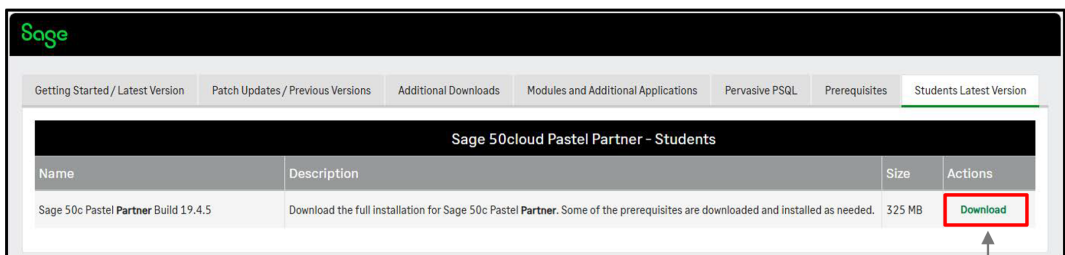
## Downloading Sage 50c Pastel Partner

19. Open your web browser and enter the following address:  
<https://pastelupdate.sagesouthafrica.co.za/>.

20. The following webpage will open.



21. On the **Students Latest Version** tab, click on **Download** to download the Sage 50c Pastel Partner software.

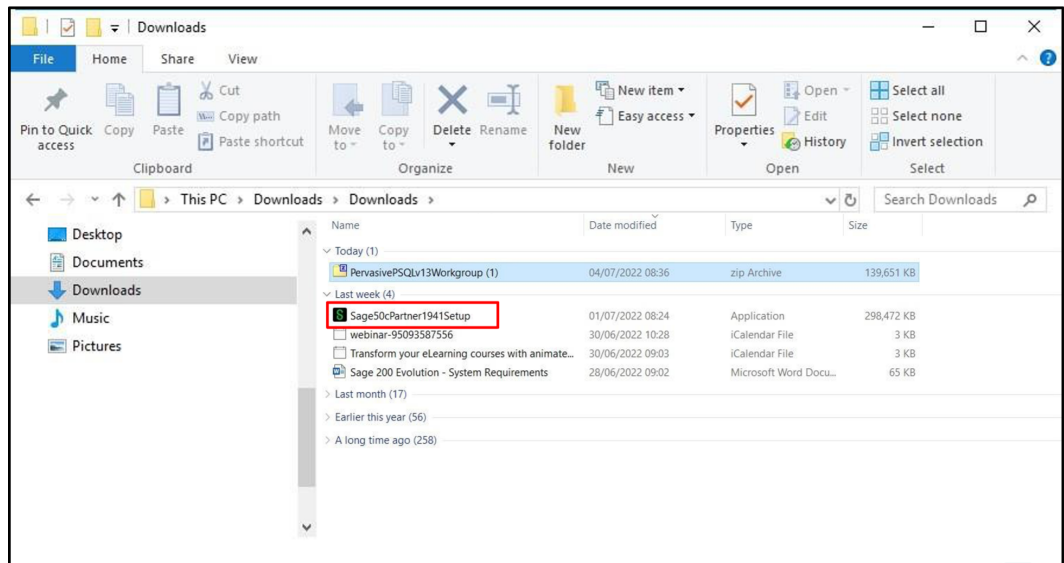


Select to download Sage 50c Pastel Partner.

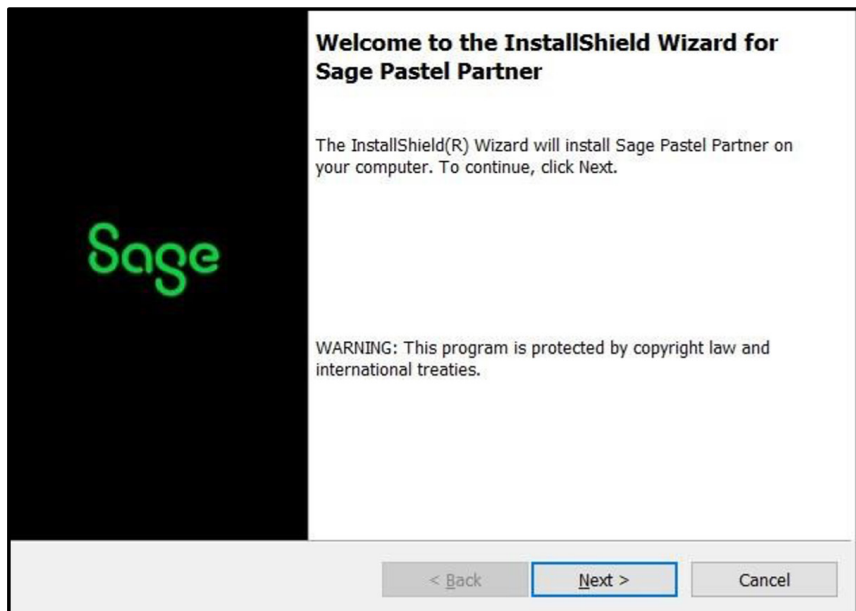
## Installing Sage 50c Pastel Partner

22. After the **Sage 50c Pastel Partner** download, you will have a **Sage50cPartnerSetup.exe** file.

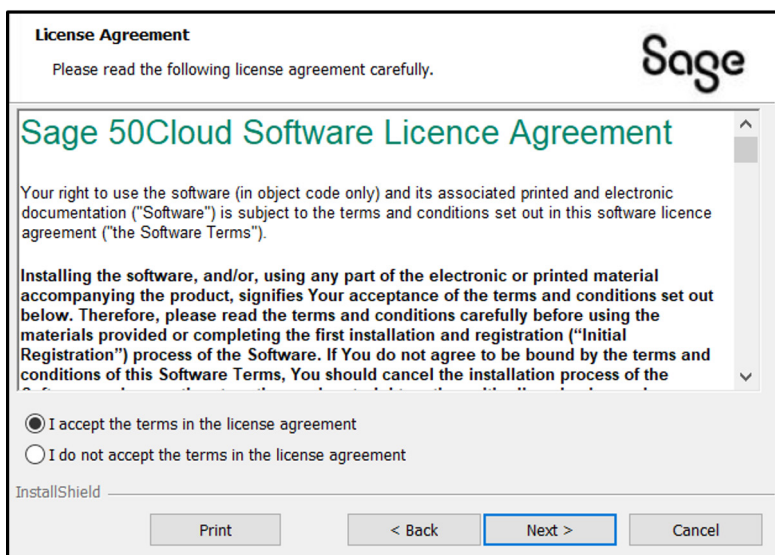
23. Double-click on **Sage 50cPartnerSetup.exe** to start the installation.



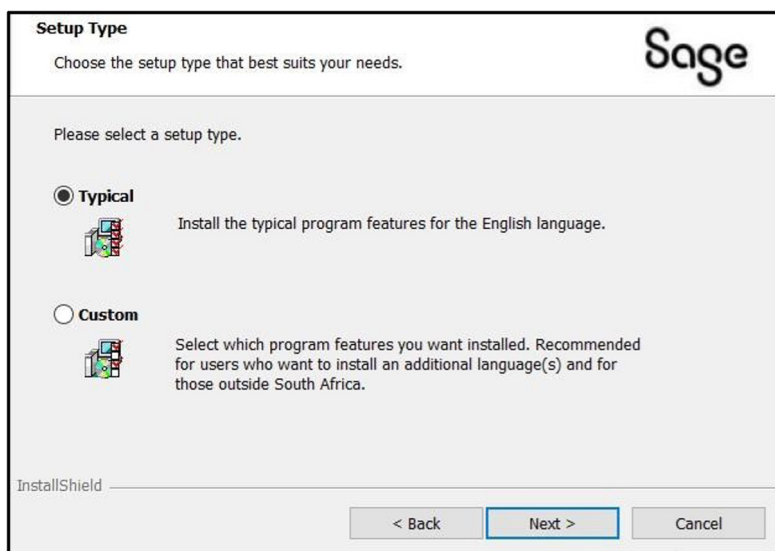
24. The Windows Installer will automatically start running on your computer. You will be prompted to install Sage 50c Pastel Partner on your computer. Click on **Next**.



25. On the License Agreement page that displays, read through the document and if you agree to the terms, select the **I accept the terms in the license agreement** option and click on the **Next** button. If you do not agree with the terms, select the option **I do not accept the terms in the license agreement** and the installation will abort. You can print the License Agreement for future reference.



26. In the next screen, you will select the **Setup Type**.

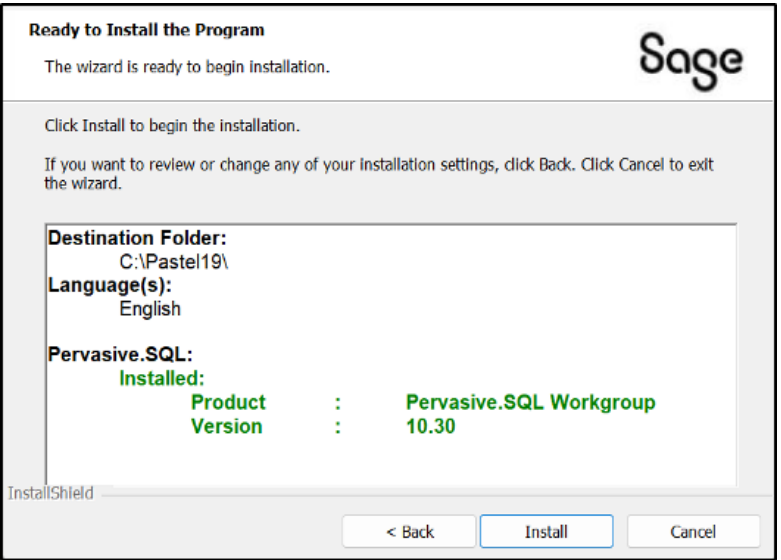


27. Select **Typical** and click on the **Next** button.

28. The **Destination Folder** screen will display. Do not change any of the settings on the screen unless you are absolutely sure you know what you are doing. If you are installing this software on a server and the Pastel folder needs to be shared for connectivity, tick the **Share the Pastel folder** tick box and then click on the **Next** button to continue.



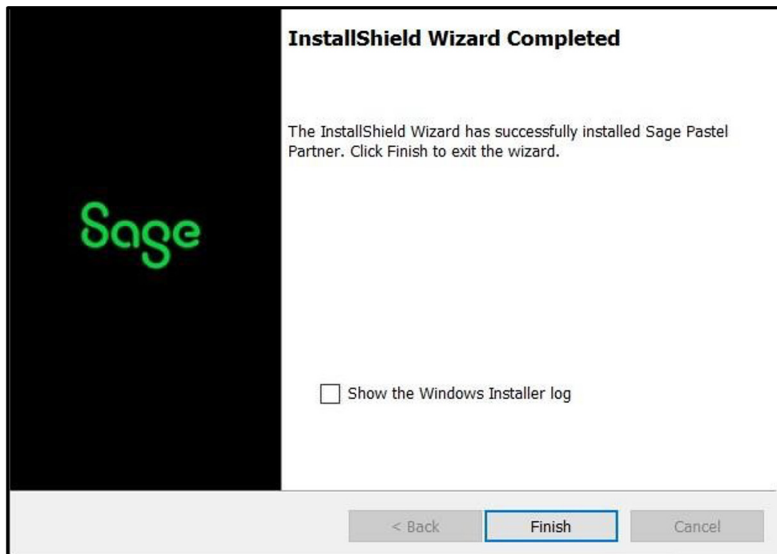
29. Sage 50c Pastel Partner will now give you a message that it is ready to install and ask you to confirm your selections. Click on the **Install** button to begin the installation. As the installation runs in the background, a series of screens will display information about Sage 50c Pastel Partner.



## Important information

Once you have clicked on the Install button, do not try to stop the installation. Stopping the Installation will cause corruption and problems on your computer. Let the installation complete and then perform an uninstall afterwards if any changes need to be made to the installation.

30. When the installation process is finished, the InstallShield Wizard Completed screen will display. Click on the **Finish** button to complete the installation. If you have installed or removed software on your computer, it is advisable to restart your computer.



31. Click on the **Yes** button to restart your computer.

